



The Intensive Interaction Institute

define, develop, and disseminate the theory and practice of Intensive Interaction



Intensive Interaction for People with Autism One-day Introduction Course

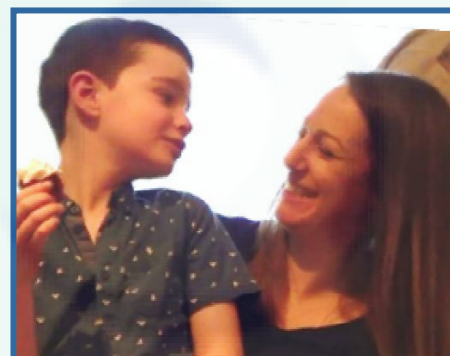
Intensive Interaction is for people who are at the earliest stages of communication development. This one-day course will enable you to develop practical techniques to communicate and connect with people with Autism.

This includes many people who speak or are starting to speak.

Venue: Holiday Inn Birmingham - Bromsgrove
Kidderminster Road
Bromsgrove, Worcestershire
B61 9AB

Date: Friday 14 September 2018

Duration: One day 9.30am - 3.30pm
Please arrive at 9.00 am for registration



Fee: **£120.00** - Includes lunch & refreshments. Extensive handout booklet given.

Course content:

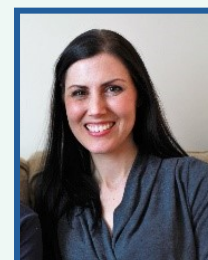
- The Fundamentals of Communication – Why is Intensive Interaction so important?
- How to do Intensive Interaction
- Videos showing children and adults with Autism making progress developing social and emotional connections, enjoying interactions, learning to communicate using vocalisations, facial expressions and gestures, becoming relaxed, making eye contact (and much more!)
- Intensive Interaction focuses on 'social communication'
- Using Intensive Interaction with people who speak
- How to get started
- Recognising outcomes and how to record keep

Who should attend?

This course is for parents, families and practitioners

Course Leader:

The course will be led by Dr Julie Calveley who is an Associate of Dave Hewett & the Intensive Interaction Institute



To book a place on the course please see overleaf ...

The Intensive Interaction Institute, 31 Buntingford Road, Puckeridge, Hertfordshire, SG11 1RT, United Kingdom

Company Registration Number: 7777199

web: <https://www.intensiveinteraction.org>

email: office@intensiveinteraction.org



The Intensive Interaction Institute



Registration Form

course reference no: 180914HIB

Intensive Interaction for People with Autism

Venue: Holiday Inn Birmingham - Bromsgrove, Kidderminster Road, Bromsgrove, Worcs, B61 9AB

Friday 14 September 2018 9.30am - 3.30pm

(registration at 9.30am)

Cost £120.00 per delegate, to include lunch, refreshments and extensive handout booklet

How to register

Please complete all the details below. You may type directly into each of the boxes. You may then save this Registration Form for your own records and email the completed saved form as an attachment to:

events@intensiveinteraction.org

Delegate Details	1st Person	2nd Person	3rd Person
First Name			
Last Name			
Postal Address work or home			
Postcode			
Delegate(s) Contact Telephone			
Delegate(s) Contact E-mail			

Payment Details

please select one of the following payment options

I/We would like to pay by debit/credit card

please provide a telephone number so that our Accounts Manager may contact you to make the payment

Telephone

I/We have paid by BACS or Faster Payments

Sort Code: 60-10-39

Account No: 14135000

Payment Ref: (please use 1st Person Postcode as a Reference)

I/We would like to be invoiced for payment

please provide the following details

Purchase Order No

Contact Name

Contact Telephone

Contact E-mail

Organisation Name

&

Billing Address

Find out more ...

If you would like to hear about the Institute and its activities please subscribe to our mailing list by visiting our website via the link below

Terms

CLOSING DATE FOR APPLICATIONS: Wednesday 5th September 2018

Cancellations notified by closing date will incur 50% of the cost; cancellations after that date will be liable for the full fee.

In making this reservation you are agreeing to these terms.

The Intensive Interaction Institute, 31 Buntingford Road, Puckeridge, Hertfordshire, SG11 1RT, United Kingdom

Company Registration Number: 7777199

web: <https://www.intensiveinteraction.org>

email: office@intensiveinteraction.org