



## Intensive Interaction for People with Autism

Intensive Interaction is for people who are at the earliest stages of communication development.

This includes many people who are speaking or starting to speak.

Intensive Interaction focuses on social communication and other central effects of autism. This one-day course will enable you to develop practical techniques to communicate and connect with people with Autism.

**Venue:** Cambridge Hotel  
4 Clare Hill  
Huddersfield  
HD1 5BS

**Date:** Friday 4th May 2018

**Duration:** One day 10.00am - 3.30pm  
Please arrive at 9.30 am for registration

Lunch & Refreshments are included

### Course content:

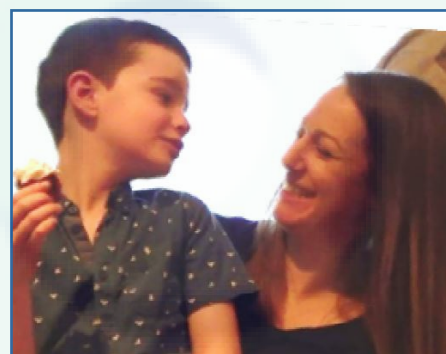
- The Fundamentals of Communication – Why is Intensive Interaction so important?
- How to do Intensive Interaction
- Video examples showing children and adults with Autism making progress developing social and emotional connections, enjoying interactions, learning to communicate using vocalisations, facial expressions and gestures, becoming relaxed, making eye contact (and much more!)
- Use of touch and issues of developmental pertinence
- Recognising outcomes and how to record keep
- How to get started

A DVD and comprehensive handout is included

### Who should go:

This course is for anyone who is involved in the care, support or education of children or adults with Autism

- Support staff
- Parents and family
- Speech and Language Therapists
- Teachers and Teaching Assistants
- Service Managers
- Occupational Therapists and Physiotherapists
- Psychologists and Assistant Psychologists
- Learning Disability Nurses



Previously I felt that there was an invisible barrier, an emotional 'gap' between us. Intensive Interaction has begun to change that. Now we have started to build this foundation I feel so much more positive about his future.

Parent of a 7 yr old with Autism

I feel Intensive Interaction has been a major contributing factor in my son's progress. His transformation in the last 6 mths has been staggering.

Parent of a 3 yr old with Autism

The course will be led by Amandine Mourière MA who is an Associate of Dave Hewett & the Intensive Interaction Institute



To book a place on the course please see overleaf ...

The Intensive Interaction Institute, 31 Buntingford Road, Puckeridge, Hertfordshire, SG11 1RT, United Kingdom

Company Registration Number: 7777199

web: <https://www.intensiveinteraction.org>

email: [office@intensiveinteraction.org](mailto:office@intensiveinteraction.org)



# The Intensive Interaction Institute



## Registration Form

course reference no: 180504CHH

# Intensive Interaction for People with Autism

Venue: Cambridge Hotel 4 Clare Hill Huddersfield HD1 5BS

Friday 4th May 2018 10.00am - 3.30pm

(registration at 9.30am)

Cost £100.00 per delegate, to include lunch, refreshments, DVD and Handouts

### How to register

Please complete all the details below. You may type directly into each of the boxes. You may then save this Registration Form for your own records and email the completed saved form as an attachment to:

[events@intensiveinteraction.org](mailto:events@intensiveinteraction.org)

Delegate Details	1st Person	2nd Person	3rd Person
First Name			
Last Name			
Postal Address work or home			
Postcode			
Delegate(s) Contact Telephone			
Delegate(s) Contact E-mail			

### Payment Details

please select one of the following payment options

I/We would like to pay by debit/credit card

please provide a telephone number so that our Accounts Manager may contact you to make the payment

Telephone

I/We have paid by BACS or Faster Payments

Sort Code: 60-10-39

Account No: 14135000

Payment Ref: (please use 1st Person Postcode as a Reference)

I/We would like to be invoiced for payment

please provide the following details

Purchase Order No

Contact Name

Contact Telephone

Contact E-mail

Organisation Name

&

Billing Address

### Find out more ...

If you would like to hear about the Institute and its activities please subscribe to our mailing list by visiting our website via the link below

### Terms

**CLOSING DATE FOR APPLICATIONS: Wednesday 25th April 2018**

Cancellations notified by closing date will incur 50% of the cost; cancellations after that date will be liable for the full fee.

In making this reservation you are agreeing to these terms.

The Intensive Interaction Institute, 31 Buntingford Road, Puckeridge, Hertfordshire, SG11 1RT, United Kingdom

Company Registration Number: 7777199

web: <https://www.intensiveinteraction.org>

email: [office@intensiveinteraction.org](mailto:office@intensiveinteraction.org)